



## ROSEMONT TRAVEL GUIDE

Here's your one-stop shop for everything you need to know prior to venturing out on your trip to Rosemont. The Village of Rosemont is a major center for commercial activity and high-traffic entertainment. Located between O'Hare International Airport and the Chicago Loop, "you can't miss it!"

With API's *Guide to Rosemont*, you'll get an inside look at some of the local eateries, festive bars, live shows, and other attractions this suburban oasis has to offer.



### THE PARK AT ROSEMONT



Opening its doors in 2012, The Park at Rosemont offers a plethora of dining options and entertainment for all ages. A seasonally-available courtyard is located in the center of the action, featuring an outdoor ice-skating rink during the winter months and farmers' markets and movies under the stars during the spring and summertime.

The Park at Rosemont is the central destination, full of tourist attractions, including highly-acclaimed restaurants as well as casual dining. Take a look at all the wonderful options The Park at Rosemont has to offer, including the Muvico Rosemont 18 Movie Theater, Kings Rosemont

Bowling Alley, Zanies Comedy Club, and Toby Keith's I Love This Bar.

Each one of these sections offers tons of fun spots to hit while you're vacationing in the greater Chicagoland area. So, go ahead and start planning your trip!

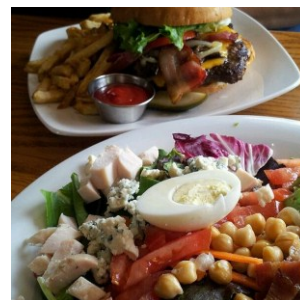
# ENTERTAINMENT

## RESTAURANTS

### THE PARK AT ROSEMONT

➤ **Park Tavern**

This sophisticated and modern watering hole offers a wide range of gourmet gastro-pub cuisine, including street vendor tacos, foot-long grilled cheese, lamb French dip, wasabi-crusted ahi tuna, and shrimp & grits. Taste everything the Midwest has to offer with a fine selection of local craft beers—Chi Town Windy City Wheat, Point Cascade Pale Ale, and New Holland Sun Dog rank among the top favorites. The perfect place to dine and unwind, Park Tavern's industrial, yet warm vibe is great for adults and children alike. 5433 Park Place, Rosemont, Illinois, 60018 (847-349-5151). Hours of Operation: 11:00 am-12:00 am (Sunday-Wednesday), 11:00 am -2:00 am (Thursday), and 11:00 am-4:00 am (Friday-Saturday); <http://www.parktavernrosemont.com>.



➤ **Adobe Gilas**

This rustic cantina serves as the area's happy-hour hub, with its famous 64-ounce margaritas and sizzling-hot fajitas. Classic Tex-Mex plates include Baja coconut shrimp, piled-high skillet, BBQ pork quesadillas, Southwest chicken salad, guacamole burgers, and more. 5455 Park Place #2, Rosemont, Illinois, 60018 (847- 233-0080). Hours of Operation: 11 am-4 am (Daily); <http://www.adobegilas.com>.

➤ **Hofbräuhaus Chicago**

This traditional German-style beer hall will place you in the midst of a lively Oktoberfest celebration. Modeled after the legendary Hofbräuhaus in Munich, Germany, Hofbräuhaus Chicago offers an authentic microbrewery experience. In addition to handcrafted beers, patrons can enjoy a variety of classic cuisine, including Bavarian potato soup, riesenbratwurst, schnitzel, apfelstrudel, and more. 5500 Park Place, Rosemont, Illinois, 60018 (847-671-2739). Hours of Operation: 11:00 am-11:00 pm (Sunday-Wednesday), 11:00 am-11:00 pm (Thursday) 11:00 am-12:00 am (Friday-Saturday); <http://www.hofbrauhauschicago.com>.



➤ **Five Roses**

Rich with Irish tradition and heritage, Five Roses specializes in pub-style favorites as well as delectable seafood platters. Grab a pint and settle in for a Guinness sausage and pretzel board or enjoy a heartier dish like braised short-rib sliders, house roast turkey, and shepherd's pie. Whether it's fried, baked, roasted, or hand-seared, Five Roses has mastered the art of Irish comfort food. 5509 Park Place, Rosemont, Illinois, 60018 (847-233-0077). Hours of Operation: 11 am-2 am (Daily); <http://fiverosespub.com>.

➤ **My Big Fat Greek Restaurant**

Through a combination of authentic Greek cuisine and a spirited atmosphere, My Big Fat Greek Restaurant truly entertains the senses. Diners nosh on everything from classic moussaka with eggplant and pastitsio to ryzogalo and roasted Greek flatbread. 5445 Park Place, Rosemont, Illinois, 60018 (847-671-1000). Hours of Operation: 11:00 am-10:00 pm (Daily); <http://www.mybigfatgreekrestaurant.com/chicago>.



➤ **Toby Keith's I Love This Bar**

Toby Keith's I Love This Bar is the essence of honky-tonk southern style. A 65-foot guitar suspended above this 360° bar adds a bang of Americana country ambiance, complete with exposed brick and tricolored wood paneling. Choose from an array of traditional honky-tonk classics like slow-smoked pulled pork, St. Louis short ribs, south-of-the-border burgers, chef's classic Cobb salad, and more. Refreshing libations have a twist of their own, as restaurant-goers sip from a mason jar and enjoy concoctions such as Cowboy Cadillac, Bullets in the Gun, and Trailerhood Tea. Live musical entertainment is provided Friday and Saturday nights, starting at 10 pm on the main stage. 5441 Rosemont Avenue, Rosemont, Illinois, 60018 (847-678-0088). Hours of Operation: 11:30 am-2:00 am (Sunday-Thursday) and 11:30 am-4:00 am Friday-Saturday); <http://www.tobykeithsbar.com>.

## NEIGHBORING QUICK BITES

➤ **Maharaja Indian Cuisine**

Maharaja is a chef-owned and operated restaurant located in the heart of Rosemont. Not only does Maharaja offer an extensive lunch buffet (served daily from 12:00 pm-3:00 pm), but carryout and delivery is available as well. Maharaja specializes in traditional Indian dishes, serving lamb, seafood, chicken, and vegetarian selections. House favorites include the Tandoori Chicken, Kachumber Raita, and Masala Pappadam. 9765 West Higgins Road, Rosemont, Illinois, 60018 (847-720-4791). Hours of Operation: 11:30 am-10:00 pm (Sunday-Thursday) and 12:00 pm-10:30 pm (Friday-Saturday); <http://www.maharajachicago.com>.



➤ **Jimmy John's Gourmet Sandwiches**

Highly acclaimed for its fresh-baked French bread (made daily), Jimmy John's sandwiches are fresh, healthy, and perfect on the go! Choose from a wide selection of hand-sliced deli meats, including seasoned roast beef, smoked ham, turkey breast, tuna salad, and genoa salami to create your own distinct sandwich. Jimmy John's also has an extensive menu of specialty chef-prepared subs. 10431 West Touhy Avenue, Rosemont, Illinois, 60018 (847-635-5500). Hours of Operation: 11:00 am-9:00 pm (Daily); <http://www.jimmyjohns.com>.

➤ **Chipotle**

Known for its fresh ingredients, Chipotle diners choose from organic black beans, spicy corn salsa, handcrafted guacamole, and seasoned carne asada, chicken, or carnitas to make a one-of-a-kind creation. Perfect for picking up to-go orders or sitting down to grab a quick bite, alongside a Mexican beer or lime margarita, Chipotle is known for its quality food and modern atmosphere. 7020 Mannheim Road, Rosemont, Illinois, 60018 (847-299-9201). Hours of Operation: 11:00 am-10:00 pm (Daily); <http://www.chipotle.com>.



➤ **Buona Beef**

Italian beef sandwiches, handmade pizzas, and fresh paninis are all the rage at Buona Beef. This Chicago-based eatery offers quick and casual dining with a selection of recipes passed down for generations in the Buonvolanto family. Top picks include the original Buona Beef sandwich, meatballs marinara, chicken artichoke panini, and Tuscan harvest salad. 10425 West Touhy Avenue, Rosemont, Illinois, 60018 (847-803-2333). Hours of Operation: 10:30 am-10:00 pm (Daily); <http://www.buona.com>.

# LOCAL ATTRACTIONS

## THE PARK AT ROSEMONT

### ➤ **Muvico Rosemont 18**

The new Muvico Rosemont 18 movie theater offers an amazing digital viewing experience, complete with 4,227 reclining, stadium-style seats. Other highlights include a VIP full-service restaurant and bar, VIP-reserved seating, and discounted group tickets to boot. Enjoy a night of cinematic magic as you view a new blockbuster flick in this old Hollywood-era themed movie stadium. 9701 West Bryn Mawr Avenue, Rosemont, Illinois, 60018 (847-447-1030). Hours of Operation: Dependent on Show Times; <http://www.rosemont.com/muvico.php>.



### ➤ **Movies Under The Stars**

The Park at Rosemont provides special movie screenings during the spring and summertime in the central courtyard area. Moviegoers are invited to bring blankets and chairs to camp out on the grassy knoll under the stars and enjoy classic and/or comedic movies. 5501 Park Place, Rosemont, Illinois, 60018 (847-825-4404). Hours of Operation: Movie screenings are typically held at 9:00 pm on Friday and Saturday evenings; [http://www.rosemont.com/the\\_park\\_at\\_rosemont.php](http://www.rosemont.com/the_park_at_rosemont.php)

### ➤ **Kings Rosemont**

This retro-inspired bowling haven features 20 regulation-sized, 60-foot bowling lanes for all skill levels to enjoy. Alongside two premium bars and a full-service restaurant, patrons can enjoy a game of pool on one of three full-sized billiard tables. With more than 50 big-screen, high-definition TVs (not to mention projector screens), Kings is the perfect spot to enjoy all-American classic cuisine while catching the latest sporting event. 5505 Park Place, Rosemont, Illinois, 60018 (847-233-0099). Hours of Operation: 11:00 am-2:00 am (Monday), 11:00 am-12:00 am (Tuesday-Thursday), 11:00 am-2:00 am (Friday-Saturday), and 11:00 am-12:00 am (Sunday); <http://kingsbowlamerica.com/rosemont>.



### ➤ **Akoo Theatre**

Formerly The Rosemont Theatre, Akoo features lavish Broadway plays, full-scale productions, and cutting-edge performances for all ages. Comfortable seating, extra-wide aisles, and a superior sound system make Akoo one of the top theatre destinations in the greater Chicagoland area. 5400 North River Road, Rosemont, Illinois, 60018 (847-671-5100). Box Office Hours of Operation: 11:00 am-7:00 pm (Monday-Friday), 12:00 pm-5:00 pm (Saturday), and Closed Sunday; <http://www.rosemonttheatre.com>.

### ➤ **Zanies Comedy Club**

Zanies Comedy Club features some of today's hottest comedic acts nationwide, including household names like "Chelsea Lately's" Heather McDonald, "Mad About You's" Paul Reiser, and "The Tonight Show" regular David Brenner. Seating is first-come, first-served, and club attendees must be 21 years of age and older. Alongside the admission fee, a 2-item minimum purchase per person is required inside the club; patrons can choose from a variety of snacks and lite appetizers alongside both alcoholic and nonalcoholic beverages. 5437 Park Place, Rosemont, Illinois, 60018 (847- 813-0484). Hours of Operation: Show Times: 8:00 pm (Wednesday and Thursday) and 8:00 pm & 10:30 pm (Friday and Saturday); <http://rosemont.zanies.com>.



➤ **Skating in the Park**

From November 23<sup>rd</sup> through February 24<sup>th</sup>, The Park at Rosemont's courtyard turns into a winter wonderland, complete with an outdoor ice-skating rink. This family-friendly activity is free and open to the public. 5501 Park Place, Rosemont, Illinois, 60018 (847-825-4404). Hours of Operation: 4:00 pm-9:00 pm (Monday-Thursday), 4:00 pm-10:00 pm (Friday), 11:00 am-10:00 pm (Saturday), and 11:00 am-8:00 pm (Sunday); [http://www.rosemont.com/graphics/park/skating\\_flyer\\_2012.jpg](http://www.rosemont.com/graphics/park/skating_flyer_2012.jpg).

➤ **Catherine Chevalier Woods/Cook County Forest Preserve**

The Catherine Chevalier Woods, part of the Cook County Forest Preserve, gives bikers, joggers, and other outdoor enthusiasts access to the Des Plaines River Trail South—a multi-use recreational corridor situated along the Des Plaines River in Cook and Lake Counties. See the map included at the end of this guide. 8800 West Lawrence Avenue, Schiller Park, Illinois, 60176. [fpdcc.com](http://fpdcc.com).

Directions from hotel (5550 North River Road, Rosemont, IL 60018): Head East for about 100 feet and turn left toward Bryn Mawr Avenue (85 feet). Turn right onto Bryn Mawr Avenue (187 feet). Take the first right onto North River Road (1.0 mile) and turn left onto Lawrence Avenue. Continue for ¼ mile and turn right at first driveway entrance (Robinson Woods South, indicated by big red star on map, located directly off Lawrence Avenue).

## CITY-OF-CHICAGO TOURIST DESTINATIONS

➤ **Willis “Sears” Tower**

Formerly the Sears Tower, Willis Tower is Chicago's iconic architectural landmark—not to mention the tallest building in North America. Take photos from 1,353 feet up in the air on the famed glass Skydeck overlooking the city's bustling financial district. The Skydeck is open daily and visitors gather on the 103<sup>rd</sup> to revel in the stunning view. 233 South Wacker Drive, Chicago, Illinois, 60606 (312-875-0066). Hours of Operation: 9:00 am-10:00 pm (Daily; April through September), and 10:00 am-8:00 pm (Daily; October through March); <http://www.theskydeck.com>.



➤ **John Hancock Center**

The famed John Hancock Center is located in the Streeterville area of Chicago. This 100-story, 1,127-foot tall skyscraper is actually the fifth tallest building in the world. So, what are you waiting for? Come and sip on a specialty cocktail in the Hancock Building's Signature Lounge (located 1,030 feet from ground level on the 94<sup>th</sup> floor) while enjoying spectacular 360° views of Chicago. 875 North Michigan Avenue, Chicago, Illinois, 60611 (888-875-8439). Hours of Operation: 9:00 am-11:00 pm (Daily); <http://jhochoicago.com/en>.

➤ **Millennium Park**

Millennium Park is home to Chicago's famous sculpture—Cloud Gate, also known by locals as “The Bean.” In addition to Cloud Gate, other main artistic highlights include the Jay Pritzker Pavilion, the Crown Fountain, and the Lurie Garden. Millennium Park is a public park located in the Loop which serves as the setting for free cultural programs, such as concerts, exhibitions, tours, family activities, and more. 201 East Randolph Street, Chicago, Illinois, 60602 (312-742-1168). Hours of Operation: 6:00 am-11:00 pm (Daily); [http://www.cityofchicago.org/city/en/depts/dca/supp\\_info/millennium\\_park.html](http://www.cityofchicago.org/city/en/depts/dca/supp_info/millennium_park.html).



➤ **Architectural Boat Tour**

Architectural boat tours offer visitors (and natives alike) the chance to soak in Chicago's renowned architecture and awe-inspiring skylines. There are a variety of different cruise lines that offer architectural tours via tour boats and water taxis. Chicago Skyline Boat Tour, Chicago Line Cruises, and Chicago's First Lady are just a few of the most popular architectural sightseeing tours in town. Chicago Architecture Foundation; 224 South Michigan Avenue, Chicago, Illinois, 60604 (312-922-3432). <http://www.architecture.org/tours>

➤ **The Art Institute of Chicago**

The Art Institute of Chicago is one of the city's most recognizable museums with its larger-than-life, bronze lion statues guarding the entrance. Art enthusiasts will revel in the broad spectrum of collections: African, ancient Byzantine, Asian, and Indian art of the Americas—to name a few. Museum-goers can explore paintings and sculptures, prints and drawings, and a variety of other mediums. 111 South Michigan Avenue, Chicago, Illinois, 60603 (312- 443-3600). Hours of Operation: 10:30 am-5:00 pm (Daily; open Thursdays until 8:00 pm); <http://www.artic.edu>.



➤ **John G. Shedd Aquarium**

The John G. Shedd Aquarium is part of the Museum Campus and is located in close proximity to both the Adler Planetarium and the Field Museum. Whether you're looking for an up-close encounter with an otter, octopus, beluga whale, penguin, or zebra shark, the John G. Shedd Aquarium has it all under one roof. In fact, 32,500 animals call the John G. Shedd Aquarium their home. Explore exhibits like "Waters of the World," "Caribbean Reef," and "Amazon Rising" and meet the native inhabitants of the rivers, reefs, lakes, and oceans of our world! 1200 South Lake Shore Drive, Chicago, Illinois, 60605 (312-939-2438). Hours of Operation: 9:00 am-5:00 pm (Monday-Friday) and 9:00 am-6:00 pm (Saturday-Sunday, and holidays); <http://www.sheddaquarium.org>.

➤ **The Field Museum**

The Field Museum is also part of the Museum Campus, located adjacent to Lake Michigan. Prized exhibits at the Field Museum include an extensive collection of dinosaur bones—famous for the largest and most complete tyrannosaurus-rex skeleton known to date: Sue. Meanwhile, "Inside Ancient Egypt" gives spectators a glimpse into the lives of ancient Egyptians, complete with 23 human mummies and 5,000-year-old hieroglyphics. All in all, 4.5 billion years are represented through artifacts, artworks, skeletons, and taxidermy at the Field Museum. 1400 South Lake Shore Drive, Chicago, Illinois, 60605 (312-922-9410). Hours of Operation: 9:00 am-5:00 pm (Open Daily, except for Christmas); <http://fieldmuseum.org>.



➤ **Little Italy**

Located in the near west side of Chicago on Taylor Street, Little Italy is primarily a restaurant district that offers visitors a plethora of traditional Italian eateries to choose from. Featuring dishes passed down from generations, Tuscany, Francesca's, and Davanti Enoteca are just a few of the top-rated destinations. Landmarks throughout the area showcase Italian culture, including the National Italian American Sports Hall of Fame, the Piazza DiMaggio, and Our Lady of Pompeii Church. <http://www.google.com/interstitial?url=http://www.littleitalychicago.com>

➤ **Little India**

The center of Little India is located on Devon Avenue—a 10-block stretch in the heart of Chicago’s far north side. This eclectic and vibrant area offers visitors a tour of the Indian subcontinent, without ever leaving Chicago. Nosh on traditional clay-oven (also known as “tandoor”) cuisine and other favorites such as Chicken Tikka Masala and Lamb Pasanda. Alongside the sights, sounds, and aromas of India-inspired markets and eateries, Jewish, Indian, Pakistani, Middle Eastern, and Asian cuisine as well as shops can be found, making Devon Avenue one of the most multicultural streets in the city. <http://www.littleindiaonline.com>.



➤ **Greektown**

The Greektown neighborhood of Chicago is located near the West Loop area. Popular restaurants featuring authentic Greek fare include Greek Islands, Santorini, and Athena. The National Hellenic Museum is also a great place for visitors to learn about the Greek immigrant experience in the US, as they view more than 6,000 artifacts, photos, and textbooks with visual testimonials of Greek life in America. <http://www.greektownchicago.org>.

➤ **Chinatown**

Chicago’s Chinatown neighborhood is located on the south side in the Armour Square community area. In fact, it is the second oldest town established by Chinese in the US, after Chinese fled persecution in California. Consequently, Chinatown features an abundance of gift shops, restaurants, herbal apothecaries, and grocery stores rich in Chinese tradition and culture. <http://www.chicagochinatown.org>.



# Des Plaines River Trail - South Section



## Trail Rules

### All Trails

- Trails open sunrise to sunset
- Motor vehicles prohibited
- RIDE OR WALK ON RIGHT SIDE OF TRAIL
- Give warning before passing other users
- Obey stop signs
- Keep dogs leashed and in control
- Do not litter. Pack out more than you pack in
- Helmets are required for all bicycles riders 14 years and younger
- In case of emergency - Call 911

### Paved Trails

- Stay in your own lane
- WALK bicycles down overpasses where designated

### Unpaved Trails

- Bicyclists and equestrians must stay on designated trails
- No off trail riding
- Bicyclists must yield to hikers and equestrians
- Hikers must yield to equestrians
- Do not use trails when muddy

## TRAIL SYSTEM SIGNAGE

- A: Intersection Marker**  
Indicates intersecting trail color (as seen on map), and direction. Directs users nearby water, restrooms, maps, or shelters.
- B: Road Marker**  
Indicates the name of the road or grove the trail is crossing or arriving at.
- C: Trail Marker**  
Confirms trail color on multi-use trails.  
Any trail not signed as above should be considered closed to bicycles and equestrians.

### KEY

Water	Information	Trail Intersection Marker
Restrooms	Shelter	

LENGTH OF MAJOR TRAILS

Yellow Trail 10.0 Miles (South Section)	Paved Trails (Solid Lines)
Total Trail Length 17.0 miles	Unpaved Trails (Dashed Lines)

(Trail Length Approximate)

### Des Plaines River Trail System

NOTE:  
Mileage is approximated to the closest tenth of a mile.

